

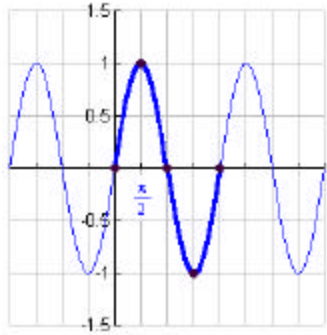
# Graphs of the Six Trigonometric Functions

$y = \sin x$

Domain:  
All Reals

Range:  
[-1, 1]

Period:  $2\pi$

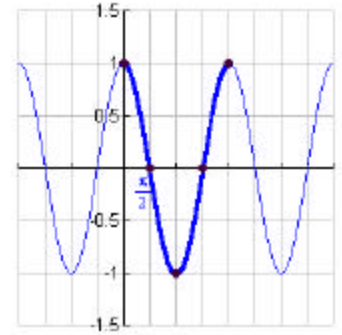


$y = \cos x$

Domain:  
All Reals

Range:  
[-1, 1]

Period:  $2\pi$

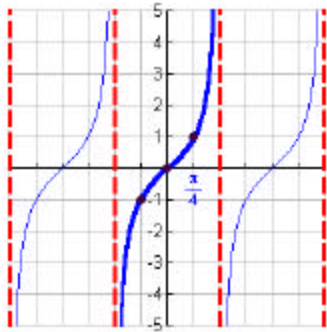


$y = \tan x$

Domain:  
All  $x \neq \frac{\pi}{2} + n\pi$

Range:  
All Reals

Period:  $\pi$

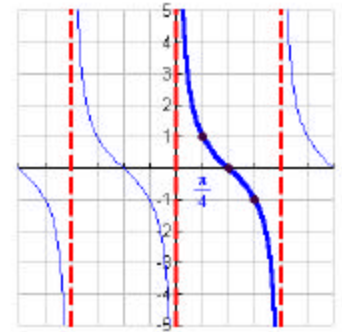


$y = \cot x$

Domain:  
All  $x \neq n\pi$

Range:  
All Reals

Period:  $\pi$

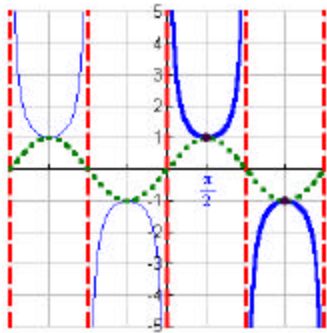


$y = \csc x$

Domain:  
All  $x \neq n\pi$

Range:  
 $(-\infty, -1] \cup [1, \infty)$

Period:  $2\pi$



$y = \sec x$

Domain:  
All  $x \neq \frac{\pi}{2} + n\pi$

Range:  
 $(-\infty, -1] \cup [1, \infty)$

Period:  $2\pi$

